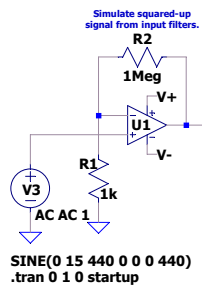
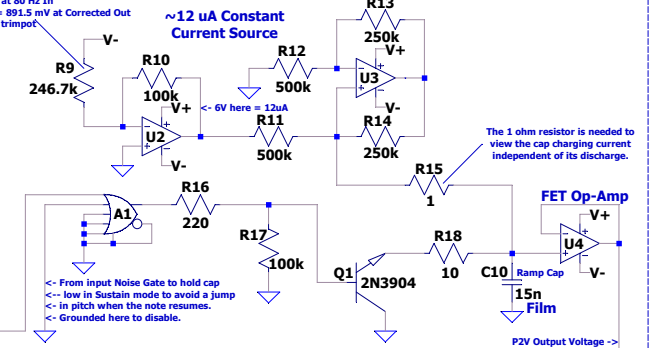
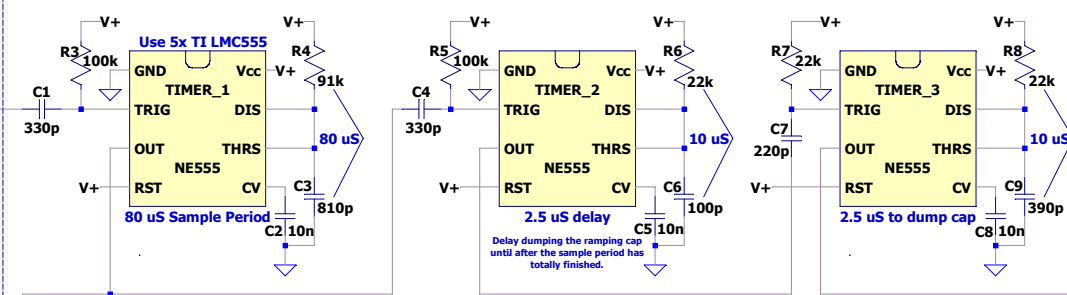


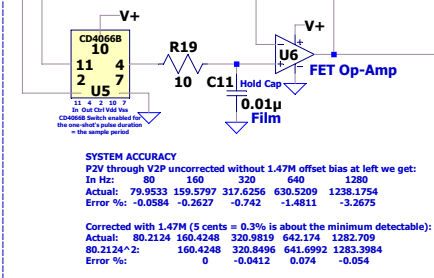
## Simulated Input



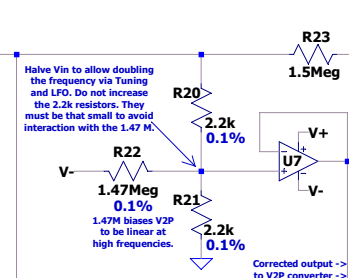
## Period to Voltage Converter



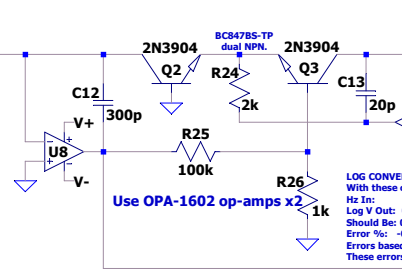
## Sample & Hold



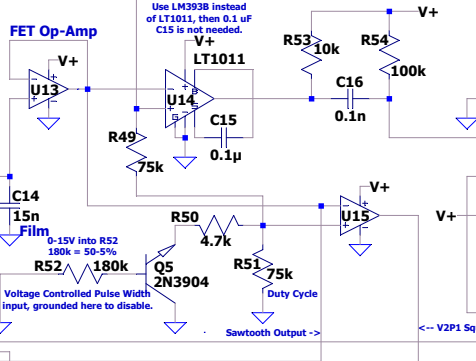
## V2P Non-linearity Corrector



## Log Converter for VC Filter



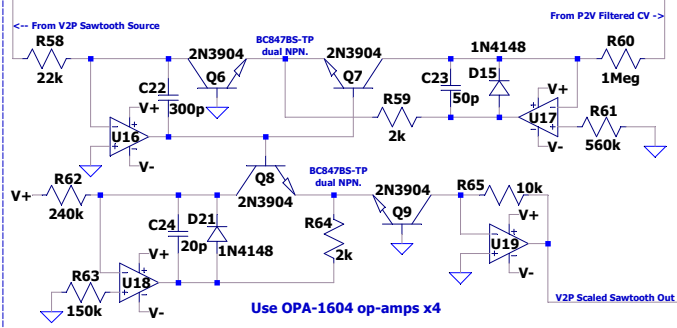
## Voltage to Period Converter



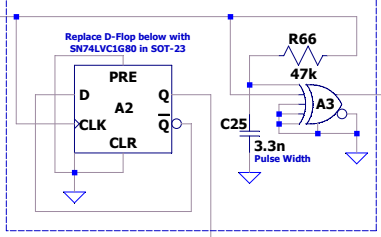
VOLTAGE TO PERIOD ACCURACY  
With these component values, uncorrected, the V2P outputs Hz from V In:

| V In:    | 10     | 5      | 2.5      | 1.25    | 0.625   | 0.3125  | 0.15625  |
|----------|--------|--------|----------|---------|---------|---------|----------|
| Hz Out:  | 40     | 80     | 160      | 320     | 640     | 1280    | 2560     |
| Actual:  | 40.026 | 79.964 | 159.3904 | 316.474 | 623.745 | 1212.18 | 2294.262 |
| Error %: | -0.064 | -0.045 | -0.381   | -1.102  | -2.54   | -5.298  | -10.36   |

## Scale / Normalize Sawtooth Output Level



## Create Octaves



## Audio Output Mixer

